

# Summer 2023 Completion Update and Summer 2024 Capital Improvement

September 14, 2023



## Summer 2023 Construction

### Wheeling

- Stadium Renovations
- Gymnasium HVAC
- Roofing
- Autos Exhaust

### Rolling Meadows

- Parking Lot
- Entrance 11 - ADA Accessible
- Gym Floor - Sand and Refinish

### Forest View Educational Center

- Harold L. Slichenmyer Board Room
- Roofing
- CTE Lab
- District Production Services

# Wheeling High School

## Gymnasium Improvements



HVAC



Wall Partition

# Wheeling High School

## Stadium Improvements



LED Lights



Turf Field



Track Replacement

# Wheeling High School

## West Roof





# Wheeling High School

## Autos Exhaust



# Rolling Meadows High School

## Parking Lot



# Rolling Meadows High School

## Entrance 11-ADA Accessible





# Rolling Meadows High School

## Gym Floor Sand and Refinish



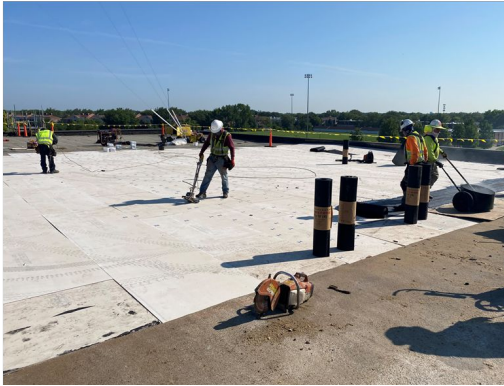
# Forest View Educational Center

## Harold L. Slichenmyer Board Room and Training Center



# Forest View Educational Center

## Roofing



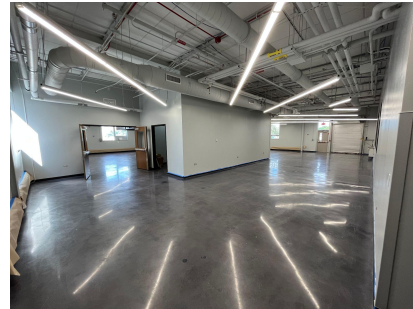
FOREST VIEW EDUCATIONAL CENTER

2023 ROOFING  
TOTAL ROOFING REPLACED: 73,900 SF  
33% OF ENTIRE BUILDING



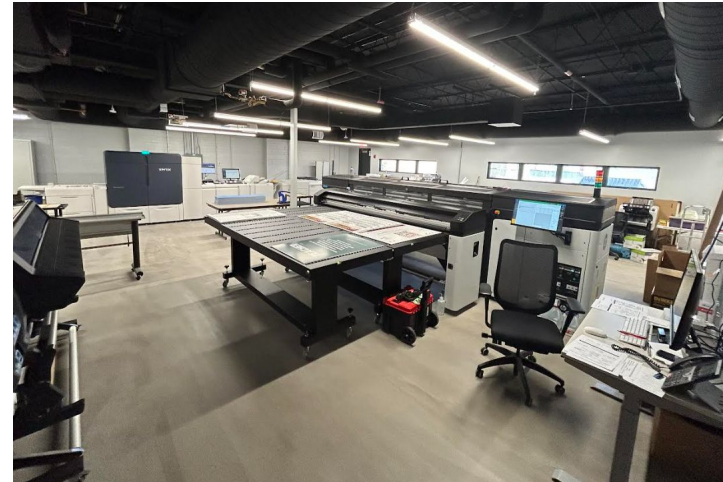
# Forest View Educational Center

## CTE Lab



# Forest View Educational Center

## District Production Services





## Summer 2023 In-house Construction



### **Rolling Meadows**

- Fitness Center

### **John Hersey**

- Fitness Center
- CLS Kitchen

# Rolling Meadows High School

## Fitness Center



# John Hersey High School

## Fitness Center



# John Hersey High School

## CLS Kitchen



## Summer Construction: 2024



### **Prospect**

- Science Wing Roof

### **Elk Grove**

- Student Services Remodel
- Culinary Lab

### **Buffalo Grove**

- Sports Fields Renovations - Phase I



# Prospect High School

## Science Wing Roof



**2024 ROOFING**  
TOTAL ROOFING REPLACED: 21,025 SF  
8% OF ENTIRE BUILDING

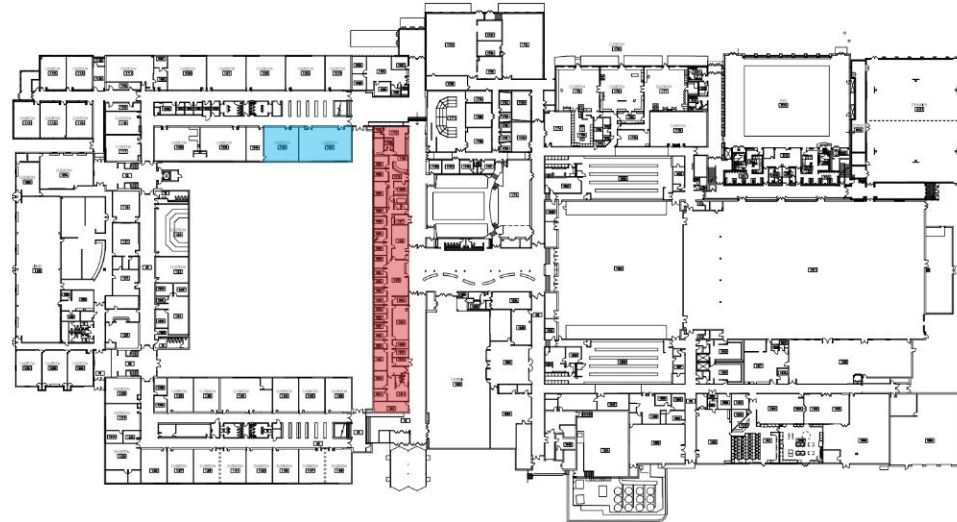
# Elk Grove High School

## Culinary Lab Remodel



# Elk Grove High School

## Student Services Remodel



-  **STUDENT SERVICES**  
TOTAL RENOVATION AREA: 8,325 SF
-  **CULINARY LAB**  
TOTAL RENOVATION AREA: 2,600 SF

# Buffalo Grove High School

## Sports Fields Master Plan Phases



# Buffalo Grove High School

## Zone “B” Sports Field Renovations

